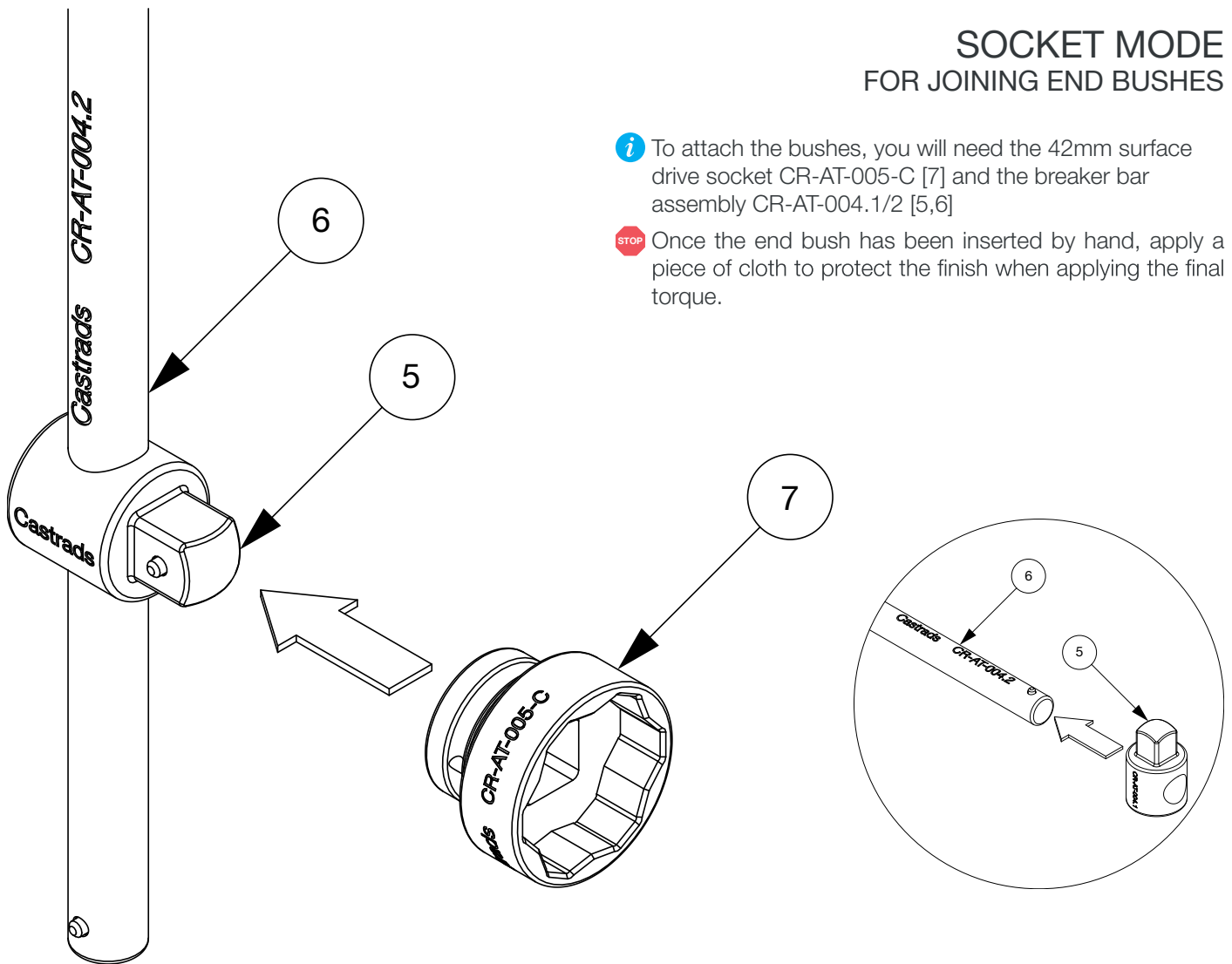


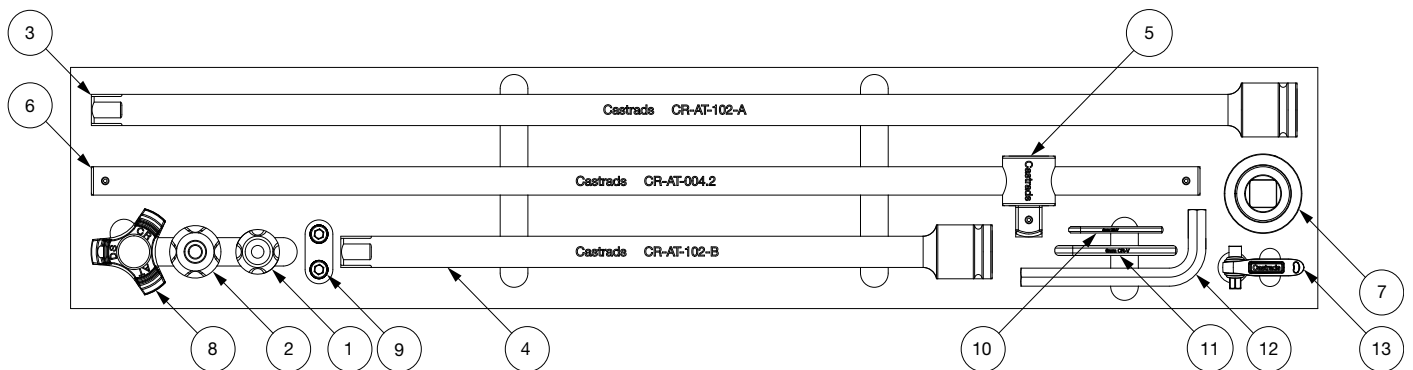
SOCKET MODE FOR JOINING END BUSHES



- i To attach the bushes, you will need the 42mm surface drive socket CR-AT-005-C [7] and the breaker bar assembly CR-AT-004.1/2 [5,6]
- STOP Once the end bush has been inserted by hand, apply a piece of cloth to protect the finish when applying the final torque.

Castrads®
Est. 2006

Assembly Tool Quick Start Guide

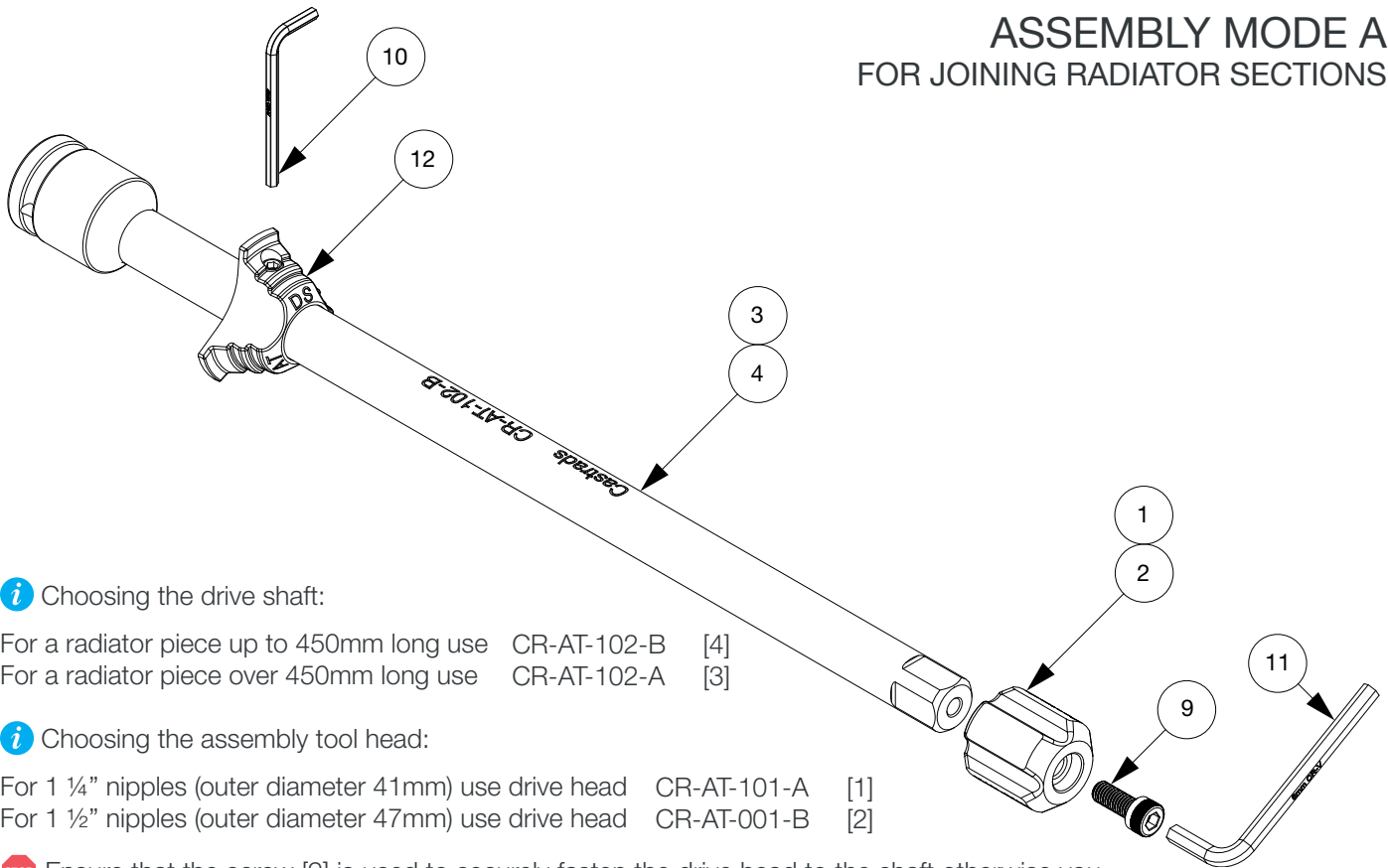


ASSEMBLY TOOL COMPONENT LIST

PC NO	PART NAME	QTY	DESCRIPTION
1	CR-AT-101-A	1	1 1/2" ASSEMBLY TOOL HEAD
2	CR-AT-001-B	1	1 1/4" ASSEMBLY TOOL HEAD
3	CR-AT-102-A	1	850MM EXTENSION BAR
4	CR-AT-102-B	1	450MM EXTENSION BAR
5	CR-AT-004.1	1	BREAKER BAR HANDLE
6	CR-AT-004.2	1	3/4" DRIVE SOCKET
7	CR-AT-005-C	1	42MM SURFACE DRIVE SOCKET

PC NO	PART NAME	QTY	DESCRIPTION
8	CR-AT-DS	1	DEPTH STOP WITH GRUB SCREW
9	M8 BOLT	2	M8 BOLT
10	4MM ALLEN KEY	1	4MM ALLEN KEY
11	6MM ALLEN KEY	1	6MM ALLEN KEY
12	CR-AT-DS	1	DEPTH STOP
13	BLK-AD-04-V5	1	UTILITY BLEED KEY, 8MM ALLEN KEY, BOTTLE OPENER

ASSEMBLY MODE A FOR JOINING RADIATOR SECTIONS



i Choosing the drive shaft:

For a radiator piece up to 450mm long use CR-AT-102-B [4]
 For a radiator piece over 450mm long use CR-AT-102-A [3]

i Choosing the assembly tool head:

For 1 ¼" nipples (outer diameter 41mm) use drive head CR-AT-101-A [1]
 For 1 ½" nipples (outer diameter 47mm) use drive head CR-AT-001-B [2]

STOP Ensure that the screw [9] is used to securely fasten the drive head to the shaft otherwise you may lose the tool in your radiator.

ASSEMBLY MODE B FOR JOINING RADIATOR SECTIONS

To apply the final torque to join your radiator sections, you will need to attach the breaker bar assembly CR-AT-004.1/2 [5,6] to the extension bar.

! The breaker bar is designed so that it can easily be removed from the extension bars CR-AT-103-A/B [3,4]. Care should be taken when handling to avoid disconnection and the bar falling to the floor or on your feet.

