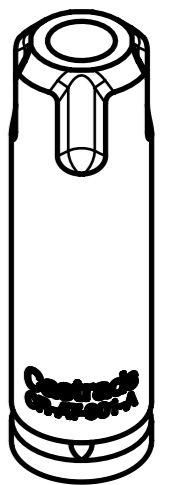
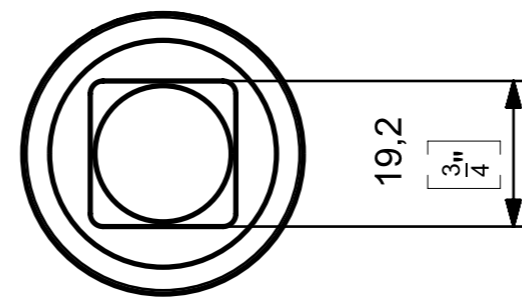
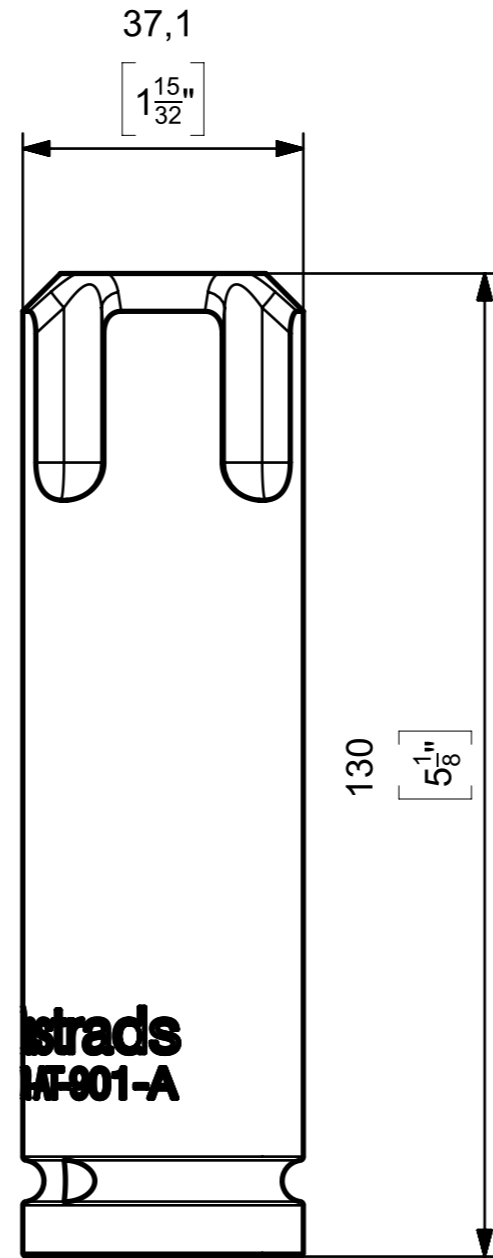


Notes
 Dual dimensions are given in millimetres followed by [inches].
 Castrads Ltd, not to be reproduced without written consent.



Responsible dept. Product	Technical reference: J. Riley	Document type Dimesnions Drawing	Document status Public Release	Material Steel	Weight 0,8KG	Scale 1:1
Castrads Est. 2006	Created by: J. Riley	Title, supplementary title AT901-A 1-1/2" Single Section Assembly Toolhead		CR-AT-901-A_EN		
	Approved by: J. Riley	Rev. A	Date of Issue 04.01.2024	Lang. en	Sheet 1/1	